



**together, we build  
a better future**

**Rock the Block #219  
Sponsorship Packet**







## Our Mission

Seeking to put God's love into action, Habitat for Humanity brings people together to build homes, communities, and hope.

## Our Vision

A world where everyone has a decent place to live.

# Everyone deserves a safe and affordable place to live.



**No matter who we are or where we come from, we all deserve to have a decent life.**

*We deserve to feel strength and stability every day. We deserve to know we have the power to take care of ourselves and build our own futures.*

At Wichita Habitat for Humanity, this is what unites us. **Through shelter, we empower.** Our shared vision is a world where everyone has a safe, affordable place to live.

People in our community partner with us to build their own homes alongside volunteers. They purchase the homes and pay an affordable mortgage. With our help, Habitat homeowners build the foundation for a brighter future for themselves and their families.

Wichita Habitat for Humanity became an official affiliate of Habitat for Humanity in October 1986. Since then, we've partnered with more than 200 families, providing them with a hand up so they can create healthy, successful futures.



It's more than just building or rehabilitating a home; it's about fostering independence and self-determination for families in our community.



Through sponsorships and fundraising, we will come together to raise funds and construct or rehabilitate a home for a family in need.



By supporting Wichita Habitat for Humanity, you are engaging your employees through corporate social responsibility while building your brand and awareness as you give back to your community.

# Home is the key.

Shelter is not a privilege – it's a need. Decent, affordable housing plays a key role in a family's education, health, wealth and well-being.

“Owning a house that will become our *home* would mean a place where my children have a yard to play in, their own rooms, and a place to return to. You have forever impacted me and the lives of my children.”

- Veronica, 2024 Habitat Homeowner



# Every home is a building block.

Home is the key to building strength, for everything. When homeownership is affordable, children have improved academic performances in school. Parents are more confident about finances. Families are healthier. **Neighborhoods are stronger.**

Wichita Habitat for Humanity, with your support, will create a strong foundation for hardworking families by making homeownership possible.



**Building Knowledge**



**Building Homes**



**Building Community**



**Building Capacity**







Together, we're growing our community.



## What is Rock the Block?

Wichita Habitat for Humanity has been committed to providing safe, affordable housing in our community. We have initially focused our efforts on infill development within the A. Price Woodard Neighborhood, working to partner with families by bringing people together to build homes, communities and hope.

Our approach involves revitalizing vacant lots and removing dilapidated, unsafe structures. We also offer crucial support to existing homeowners through our Home Repair Program.

The “Rock the Block” initiative is a key part of our broader strategy to create and preserve affordable homeownership opportunities within specific target neighborhoods. By concentrating our resources, we maximize our impact and significantly improve the quality of life for more of our neighbors.

This year, we are excited to announce an expansion of our efforts adjacent to **Rock the Block Piatt**. **We are now expanding further into the 67219 area, with plans to rehabilitate an additional 13 homes and several new construction opportunities.** This expansion allows us to continue learning and growing with our community, creating a better future for even more Habitat families and the existing neighbors.

The success of Rock the Block relies on the generous support of our corporate sponsors. We enthusiastically invite you and your businesses to join us in making Rock the Block a resounding success.

In return for your valuable sponsorship, you will receive a range of significant benefits, including impactful marketing opportunities and valuable team-building experiences. Moreover, you will have the immense satisfaction of knowing that you are actively contributing to the betterment of our community.

### Ready to Rock the Block?

Help us bring new life to communities with Rock the Block. No experience is necessary. We'll give you the tools, skills, and guidance you need to make an impact! Contact Felicia Saunders at (316) 269-0755 or [felicia@wichitahabitat.org](mailto:felicia@wichitahabitat.org) for more details.



# Every partnership is an investment.

Partnering with Wichita Habitat for Humanity supports our community and the future of our city. Your sponsorship will help ensure that *everyone has a decent place to live*. Corporate partners receive significant social, organizational, marketing, and fiscal benefits while helping local families build and purchase their own homes.

## Corporate Social Responsibility

A corporate partnership with Habitat for Humanity can give your organization a way to enunciate your social responsibility strategy clearly and concisely – helping build a world where everyone has a decent place to live. Create a meaningful relationship with the impact, history, and brand value of Habitat for Humanity and make yourself stand out with your consumers, vendors, employees, peers, or business partners.

In addition, you would have direct connection and meaningful relationships with the families you engage with – *bringing people together to build homes, communities, and hope*.

## Employee Engagement

Wichita Habitat for Humanity's build site is a volunteer experience like no other. This is the ultimate team-building opportunity that boosts morale and shows your employees your commitment to making a difference in the community.

Employees will learn new skills and interact with qualified staff and core volunteers who have been engaged with the organization for a number of years.

### Did you know?

Employers often see higher employee engagement and satisfaction within their companies when offering benefits such as volunteer time off (VTO), making partnering with organizations like us a **win-win** for everyone.



# Every contribution builds community.

Volunteering with Wichita Habitat for Humanity is a rewarding and impactful experience. Your staff gets the opportunity to work together towards a common goal, promoting camaraderie and collaboration — skills that are beneficial in the workplace. When your team volunteers with Wichita Habitat for Humanity, they build relationships, gain valuable skills, and make a meaningful difference in their community.



With our Rock the Block #219 initiative, there will be numerous building opportunities on **13 homes** situated along the 2600 blocks of Minnesota Avenue and Ash Street. Volunteers can participate in these build days **starting in 2026** and continuing throughout the year. Teams are carefully guided by experienced Habitat staff in a safe and enjoyable environment.

Whether you contribute regularly or become a dedicated core volunteer, you are an invaluable member of the Wichita Habitat for Humanity family. By joining our diverse community of volunteers with a wide range of skills, we can significantly enhance the impact of Wichita Habitat for Humanity and the ReStore Wichita on families in Wichita and Sedgwick County. **Specific dates and times for volunteer shifts may vary.**

Learn more how you can get involved at [wichitahabitat.org/volunteer](https://wichitahabitat.org/volunteer).

## WHAT YOUR VOLUNTEER DAY LOOKS LIKE:

7:45 AM	CHECK-IN/REGISTRATION
8:00 AM	ORIENTATION/TASK ASSIGNMENTS
8:15 AM	WORK BEGINS
11:30 AM	LUNCH (30 MIN) <sup>1</sup>
3:00 PM	SITE CLEANUP
3:30 PM	HEAD HOME!

## WHAT TO WEAR AND BRING:

- WATER BOTTLE
- CLOSED-TOE TENNIS SHOES OR BOOTS
- CLOTHES YOU DON'T MIND GETTING DIRTY
- LIGHT-COLORED, COTTON CLOTHING AND A HAT (FOR SUMMER)
- LAYERED CLOTHING (FOR WINTER)

<sup>1</sup> Lunch is generally not provided by Wichita Habitat for Humanity. Ask us about sponsored lunch opportunities and arrangements.



# Every sponsorship frames the future.

Your sponsorship supports Habitat's mission — a world where everyone has a decent place to live. Your financial support and your time will help bring strength, stability, and independence to local families in Sedgwick County.



## **Heart of the Neighborhood Sponsor / Whole House Sponsor** **\$100,000**

Wichita Habitat for Humanity will work with you to customize your sponsorship package.



## **Cornerstone of the Community Sponsor / Lead Sponsor** **\$50,000**

Wichita Habitat for Humanity will work with you to customize your sponsorship package.



## **Community Builder Sponsor / Foundation Sponsor** **\$25,000**

- Company recognition on Wichita Habitat for Humanity website and social media, as well as build signage.
- Opportunity to have up to 50 volunteers engage in build days during the first week of building in the neighborhood (including a potential kick-off event).
- Recognition and opportunity to speak at home dedication ceremony.



## **Hometown Hero Sponsor / Framer Sponsor** **\$10,000**

- Company recognition on Wichita Habitat for Humanity website and social media, as well as build signage.
- Opportunity to have up to 40 volunteers engage in four (4) build days.
- Recognition and opportunity to speak at home dedication ceremony.



## **Neighborly Supporter Sponsor / Cornerstone Sponsor** **\$5,000**

- Company recognition on Wichita Habitat for Humanity website and social media.
- Opportunity to have up to 20 volunteers engage in two (2) build days.
- Recognition at home dedication ceremony.



## **Friend of the Neighborhood Sponsor / Brick & Mortar Sponsor** **\$3,000**

- Company recognition on Wichita Habitat for Humanity website and social media.
- Opportunity to have up to 10 volunteers engage on one (1) build day.



# Every roof shelters hope.

Wichita Habitat for Humanity is committed to revitalizing neighborhoods and empowering families in Sedgwick County.

Our Rock the Block #219 initiative is gut-rehabbing 13 houses to create safe, affordable homes. Ensuring their structural integrity and long-term security begins with solid roofs. Additionally, we're building carports as a safe, affordable alternative to garages. Your support protects families and vehicles while enhancing property value.

## The Opportunity: Roof & Carport Sponsorship

Join us in providing vital protection and peace of mind to future homeowners by sponsoring roof replacements and carport installations!

### Impact:

By sponsoring a roof replacement and carport installation, you directly contribute to the rehabilitation process, providing families with a safe and stable environment.

### Why Now?

The existing roofs are reaching a critical stage. Replacing them during the renovation ensures:

- **Home Insurance Eligibility:** New roofs are essential for qualifying for affordable homeowners insurance, significantly impacting the long-term financial stability of our families.
- **Reduced Insurance Costs:** Older roofs increase the cost of homeowners insurance. Replacing the roofs will reduce this cost.
- **Long-Term Durability:** New roofs provides decades of protection against the elements, safeguarding the investment in these homes.
- **Cost-Effective Alternative:** Existing homes did not come with a garage. Carports provide protection and a more affordable solution than building a full garage.
- **Comprehensive Renovation:** Replacing the roofs as part of the rehabilitation process ensures a holistic and sustainable renovation.



**GAF**

Our collaboration with GAF allows us to connect with contractors who share our passion for community support. This vital partnership enables us to replace roofs every year, directly improving homes and lives. **Connect with us to learn more about this opportunity!**

**We will work with you to customize your sponsorship package.**

Contact Felicia Saunders at (316) 269-0755 or [felicia@wichitahabitat.org](mailto:felicia@wichitahabitat.org) for more details.



# Building Responsibly.

Wichita Habitat for Humanity is expanding its transformative gut-rehabilitation project in 67219 beyond Rock the Block Piatt, revitalizing 13 additional homes in Sedgwick County.

As we build safe, affordable housing, we are committed to responsible construction practices. We are seeking dedicated supporters to cover the costs of construction waste management, ensuring a clean, efficient, and environmentally conscious build.

## The Opportunity: Construction Waste Sponsorship

Become a vital partner in our Rock the Block Piatt initiative by sponsoring the comprehensive management of construction waste.

### Impact:

Your sponsorship will directly cover the costs associated with:

- Waste disposal and handling fees.
- Recycling services.
- Dumpster rentals and removal.
- Ensuring a clean and safe construction site.

### Why It Matters:

- **Cost-Effective Construction:** Your support frees up vital resources for other critical aspects of the rehabilitation process.
- **Environmental Responsibility:** Proper waste management minimizes landfill impact and promotes recycling.
- **Site Efficiency:** Professional waste handling ensures a clean and organized construction environment.
- **Community Image:** Demonstrates a commitment to responsible building practices in Sedgwick County.
- **Keeping Our Focus:** Allowing Wichita Habitat for Humanity to focus on the rehabilitation of 13 safe, affordable homes.

**We will work with you to customize your sponsorship package.**

Contact Felicia Saunders at (316) 269-0755 or [felicia@wichitahabitat.org](mailto:felicia@wichitahabitat.org) for more details.



# Every moment makes a home.

Every year, Wichita Habitat for Humanity hosts a variety of builds and special events designed to engage our community, raise vital funds, and celebrate the incredible progress we make together. From hands-on build days to inspiring celebrations, each event offers a unique opportunity to support our mission and make a tangible difference in the lives of our families.

## Our Signature Events



**c. February - May**

### Women Build

Women Build is a Habitat for Humanity campaign that empowers women around the world to positively impact lives in their communities.



**June**

### Riverfest Panel Build

Bring your team together to construct all wall panels necessary to build an entire home during Riverfest!



**September**

### Raise the Roof

Raise the Roof is our signature fundraising event, bringing the community together to share the stories and impact of our Habitat families.

**January**

### MLK Day of Service

Join us for an incredible morning bringing together hundreds of volunteers to frame the walls of a future home in honor of Dr. Martin Luther King, Jr.



**c. April - July**

### Air Capital Build

Partner with the aviation industry in Wichita to build affordable homes for families in the Air Capital Build.



**August**

### Legislative Build

Putting our advocacy into action! We invite our local and state elected officials, legislators, and representatives to dive into the world of affordable housing.



**October**

### Trunk or Treat

Get into the Halloween spirit with creatively decorated car trunks, plenty of candy, and family-friendly activities in our community.

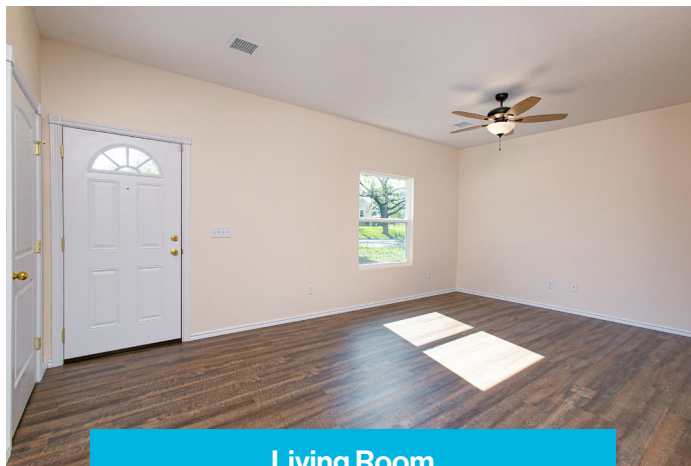




# New Home Features & Floor Plans

Our homes feature a spacious open plan! A refrigerator and range are included.

Wichita Habitat for Humanity offers qualified families a chance to buy a home with an affordable monthly mortgage.



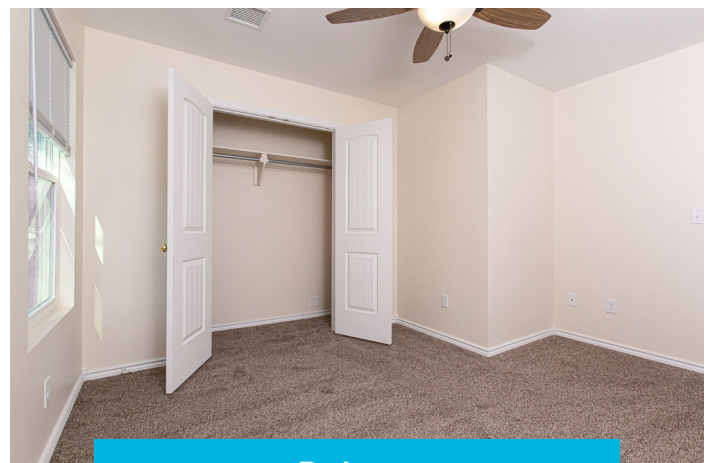
Living Room

## PROPERTY FEATURES:

- Ranch style, slab on grade
- No special assessments
- Buyer's household size determines 3-, 4-, or 5-bedroom plans
- Square footage ranges from 1,150-1,514 sqft.
- One-car garage w/ dedicated storage alcove
- Fenced yard
- ENERGY STAR® certified for maximum energy efficiency
- Zero-percent interest financing for qualified program applicants



Kitchen & Dining Area



Bedroom

# Diving Into Gut Rehabilitation



**We are transforming communities, one home at a time.**

Wichita Habitat for Humanity is expanding beyond new construction. We're actively involved in exciting rehabilitation projects, revitalizing existing homes and addressing community housing needs in new ways.



## The Essential Stages of a Gut Rehabilitation

Our revitalization process often involves these key stages, adapting to each home's unique needs:

### 1. Demolition & Remediation

Tearing down the existing structure to its framework, ensuring safe working conditions for staff and volunteers.

### 2. Structural Changes

Addressing the home's foundational and framing elements to ensure lasting durability and meet's Habitat's standards.

### 3. Exterior Replacement

The home undergoes a major revitalization with the use of volunteers to replace siding, paint, install windows/doors, and more.

### 4. Electrical & Plumbing

Installing all new electrical wiring and plumbing systems.

### 5. Roof & HVAC

Critical updates to the roof and the installation of new HVAC systems may be undertaken during our revitalization efforts.

### 6. Interior Finishes

Completing the home with new floors, walls, and other interior touches.



Conceptualization



# Homeowner Qualifications

## Why homeownership?

Families seeking a path to a brighter future partner with Habitat to build or improve a decent and affordable home. Owning a Habitat home goes beyond just having a place to live – it's about gaining stability, security, and the chance to build a lasting legacy for generations to come.



## Program Guidelines

We provide affordable homeownership opportunities to qualifying households, earning between 35-80% of the Area Median Income (AMI) for Sedgwick County.

To qualify, you must show a need for housing, be willing to partner with Habitat by volunteering your time and effort in the construction of your home and attending educational classes that build financial independence, and demonstrate the ability to pay.



## Need for Housing

Potential homebuyers might be living in unhealthy or unsafe conditions, homes that are inaccessible, or may be paying too much rent.

## Willing to Partner with Habitat

Sweat equity is the Habitat for Humanity term for partnering with us to help build your home and further Habitat's mission. We require each Habitat partner household to complete between 250 hours and 400 hours of sweat equity depending on your family size. Completion of sweat equity can take anywhere from three (3) to 12 months.



## Ability to Pay

If approved, your mortgage will be a 20-year (up to 30-year), zero-percent (0%) interest mortgage on the principal amount. This helps to ensure that you are able to continue making your payments on your home while having enough remaining income to provide a healthy, stable life for you and your family.

# Families in the Pipeline

Wichita Habitat for Humanity's family partners are the heart of our mission. These individuals and families are working towards the dream of homeownership and are diligently progressing through the required program steps, including education, putting time and effort into the construction of their home, and more. They are the future homebuyers of the houses we build and renovate including initiatives like *Rock the Block #219*. Your support builds hope by providing them with stability and the opportunity to achieve their dream of owning a home.

## 2026 and 2027 Family Partners



## Our Impact on Rock the Block #219



**13 homes** will be purchased



**25 adults** and **21 children** will be able to live in a safe and affordable home by 2027

# Becoming a Foundation Builder



## Make a Difference Today!

Together, we build **opportunity**.

**EVERY DONATION**, no matter the amount, makes a difference in our community. Your consistent support empowers families to achieve the dream of homeownership as they work hard and make sacrifices to own a home.

You can create a reliable foundation upon which Wichita Habitat for Humanity can plan and build, ensuring that more families have a safe and decent place to call home.

Want to set up **planned retirement, IRA, estate, or other qualified charitable distribution giving**? Contact us at (316) 269-0755 and we can assist you on making a lasting legacy.



[wichitahabitat.org/donate](https://wichitahabitat.org/donate)



# Home Repair Program



Wichita Habitat for Humanity's Home Repair Program partners with income-eligible homeowners experiencing critical interior and exterior issues that threaten the health, safety, and accessibility of their homes. These repairs can address deferred maintenance, sudden damage, or everyday wear and tear.

By providing comprehensive repairs, the program empowers homeowners to age in place with dignity and security in their own homes. This not only benefits them but also helps preserve valuable affordable housing options within the community, contributing to a thriving environment for all.

## Our Impact



**30 homes** completed in 2024



**56** is the average age of a homeowner  
(with about half being over the age of 60)



**\$15,129** average project cost



## Types of Repairs



**Critical Repairs**



**Minor Repairs**



**Accessibility**



**Other Home Preservation**

# ReStore Wichita

ReStore Wichita sells new and gently-used furniture, appliances, building supplies, home goods, and more at discounted prices. We are dedicated to reusing and repurposing donated goods and diverting items from landfills in order to lessen our impact on the environment.

**All proceeds benefit the mission of Wichita Habitat for Humanity to build and repair homes, communities, and hope.**



*Located at:*

**601 N. West St.**  
Wichita, KS 67203  
(316) 943-6996

**Hours of Operation:**  
Mon.-Sat.  
9 a.m.-6 p.m.



## Donations are welcome!

Breathe new life into your unwanted treasures. ReStore welcomes your donations and will accept new or gently used items.

From deconstruction projects to decluttering your space, you can support our mission of building a stronger, more stable community.

Learn more about ReStore and view our donations guideline at:

**[wichitahabitat.org/restore](http://wichitahabitat.org/restore)**

Drop off or schedule a pickup today for your donations by calling us at (316) 943-6996.



# Wichita Habitat for Humanity

## Board of Directors

From diverse industries and backgrounds, our board members share a singular conviction: that helping others is an inherent responsibility. They believe providing homes and stability is a powerful way to enact this belief, making a tangible difference in lives.

### Executive Committee

Chet Sears,  
Koch Engineered Solutions  
**Board Chair**

LaShonda Porter,  
Fidelity Bank  
**Vice Chair**

Mark Herbert,  
Community Volunteer  
**Treasurer**

Valerie White,  
Wichita State University  
**Secretary**

Bill Matthews,  
Foulston Siefkin, LLP  
**Legal Counsel**

### Board Members

Ann Patterson  
Community Volunteer

Jennifer Utechtt  
Textron Aviation

Chris Beasley  
Key Construction, Inc.

Chris Madsen  
W.A.M. Capital Corp.

Matt Goebel  
Star Lumber & Supply

Jim Boone  
NorthStar Comfort Systems

Nancy Kowalski  
Invista

Pete Loecke  
Spirit AeroSystems

Robert Moody  
Martin, Pringle, Oliver,  
Wallace & Bauer, LLP

Sarah Lopez  
HumanKind Ministries

John Ford  
TESSERE

Yeni Silva-Renteria  
International Rescue Committee

Robert Miller  
RoJo Properties, LLC



We will work with you to customize your sponsorship package.  
Contact Felicia Saunders at **(316) 269-0755** or [felicia@wichitahabitat.org](mailto:felicia@wichitahabitat.org) for more details.

Wichita Habitat for Humanity partners with families to create safe, affordable homes, fostering the stability and financial independence essential for them to thrive. By uniting with donors and volunteers, we're actively building stronger lives and neighborhoods across our community.

Seeking to put God's love into action by bringing people together to build homes, communities, and hope.

© 2025 Wichita Habitat for Humanity. All Rights Reserved.



(316) 269-0755  
wichitahabitat.org  
**Building Homes, Community, and Hope.**